



ZRICKS

and real estate constructions
mahalakshmi



ZRICKS

mini rediff constructions
mahalakshmi





ZRICKS.COM

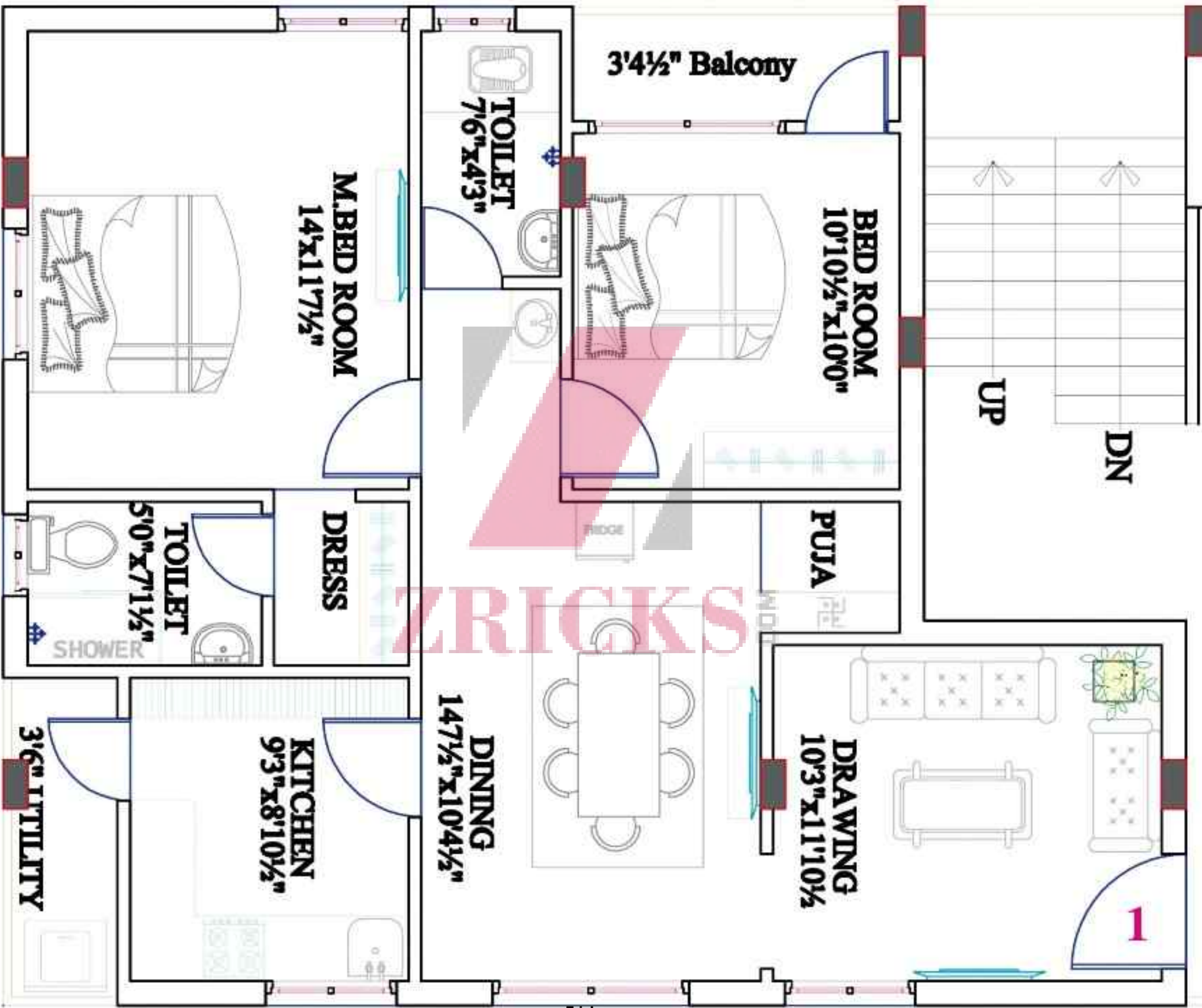


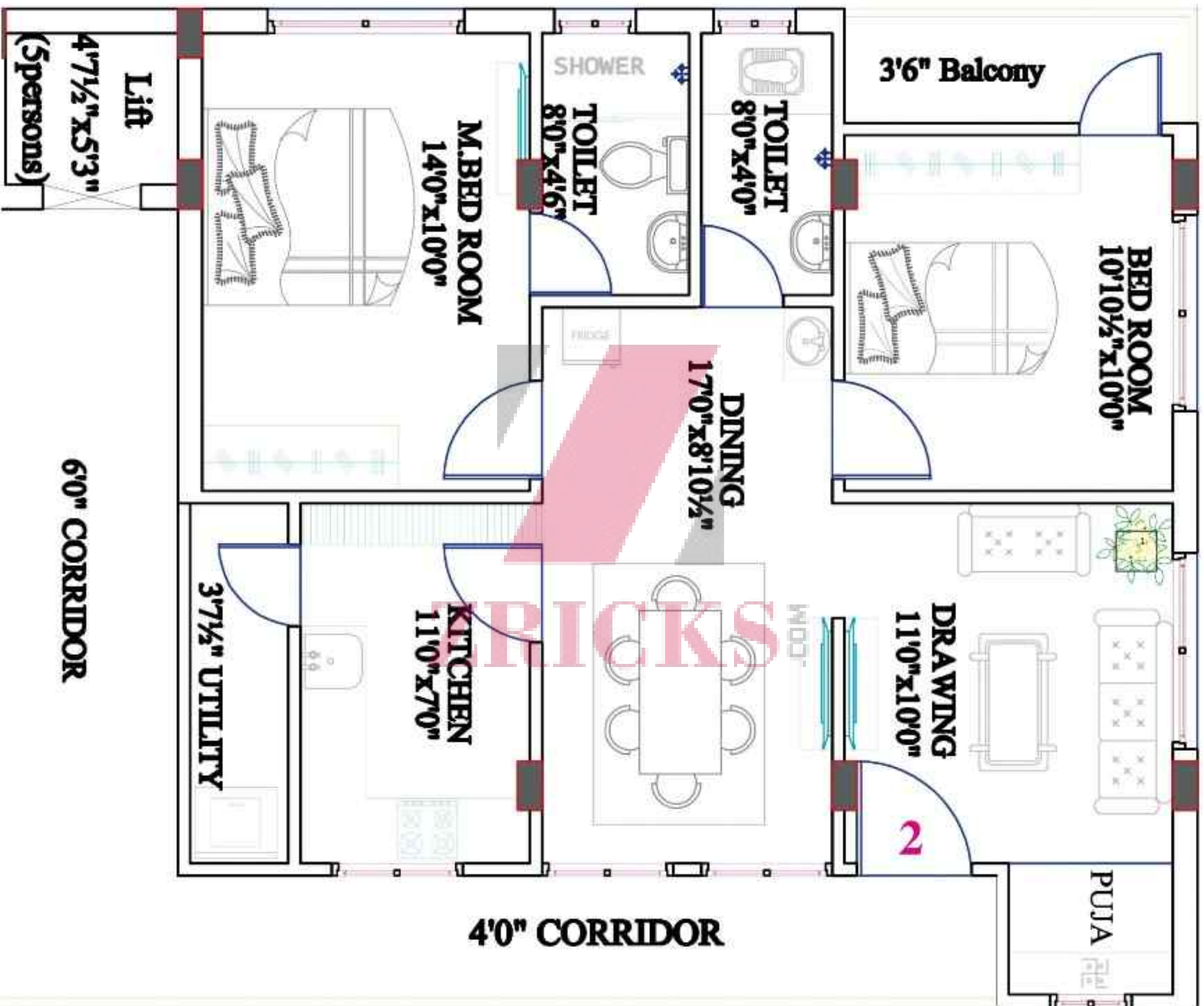
ZRICKS.COM

mahatmi



ZRICKS







Flat No.	Type	Area in sq.
1	2 BHK	1171

Flat No.	Type	Area in sq.
2	2 BHK	1168





Bank of
India

mahalakshmi

St. Anns
College

Chandana
Brothers

Aravind
Eye hospital

ZRICKS.COM

ICICI
Bank

Mehdipatnam - Gachibowli Main Road

Mehdipatnam

- **Structure :**
Stilt + 5 Floors RCC framed structure, Seismic Zone II compliant
- **Super Structure :**
9" thick light weight brick masonry for external walls, 4 1/2" thick light weight brick masonry for internal walls
- **Plastering :**
Plastering for all external, Internal walls and Ceiling with two Coats of Cement mortar with sponge finish.
- **Painting :**
Two coats luppam finish and painting in plastic Emulsion for internal walls. External wall in weather proof Acrylic paints or equivalent
- **Doors :**
Main door frame in teak wood with Designed Teak wood shutter with melamine polish and designer hardware of reputed make. Internal doors will have teak wood frames with water resistant molded shutters fitted with reputed make hard ware fittings with painting.
- **Windows :**
With MS safety grills
- **Flooring :**
24" x 24" Branded Vitrified tiles, Ceramic tiles flooring for Balcony and utility areas.
- **Kitchen :**
Granite top cooking platform with stainless steel sink with two taps and glazed ceramic tile dadoing up to 2'.0" ht. above the platform.
- **Toilets :**
Toilets will be provided with I.W.C./ E.W.C. with wash basin, shower point, wall mixture. Non skid ceramic tiles flooring and gazed tiles dado up to door height..
- **Electrification :**
Three phase electrical (3KVA) supply, Concealed copper wiring with good quality switches. 15 Amps Power sockets shall be provided in Kitchen, toilet and dining room. Adequate light points shall be provided in all the rooms. T.V. and Telephone connection shall be provided in hall. A/ C provisions for all bedrooms. Power outlets for geysers in attached bathrooms.
- **Water supply :**
Municipal & Bore well water connections with separate storage provision in overhead tank and sump. One Municipal water

connection will be provided in kitchen & Bore well water supply connection with required pumps.

- **Sanitary :**

ISI Quality, PVC Pipes for waste water lines and sewer lines
G.I./ U.P.V.C. Pipes for Water Lines.

- **Lift :**

5 Passenger capacity V3F lift of KONE make.

- **Security :**

Inter-cum phones for all flats.

- **Stand by Power :**

Generator for Common lighting, Lift, Motors & Light and Fan points for all rooms in the flat.

www.Zricks.com